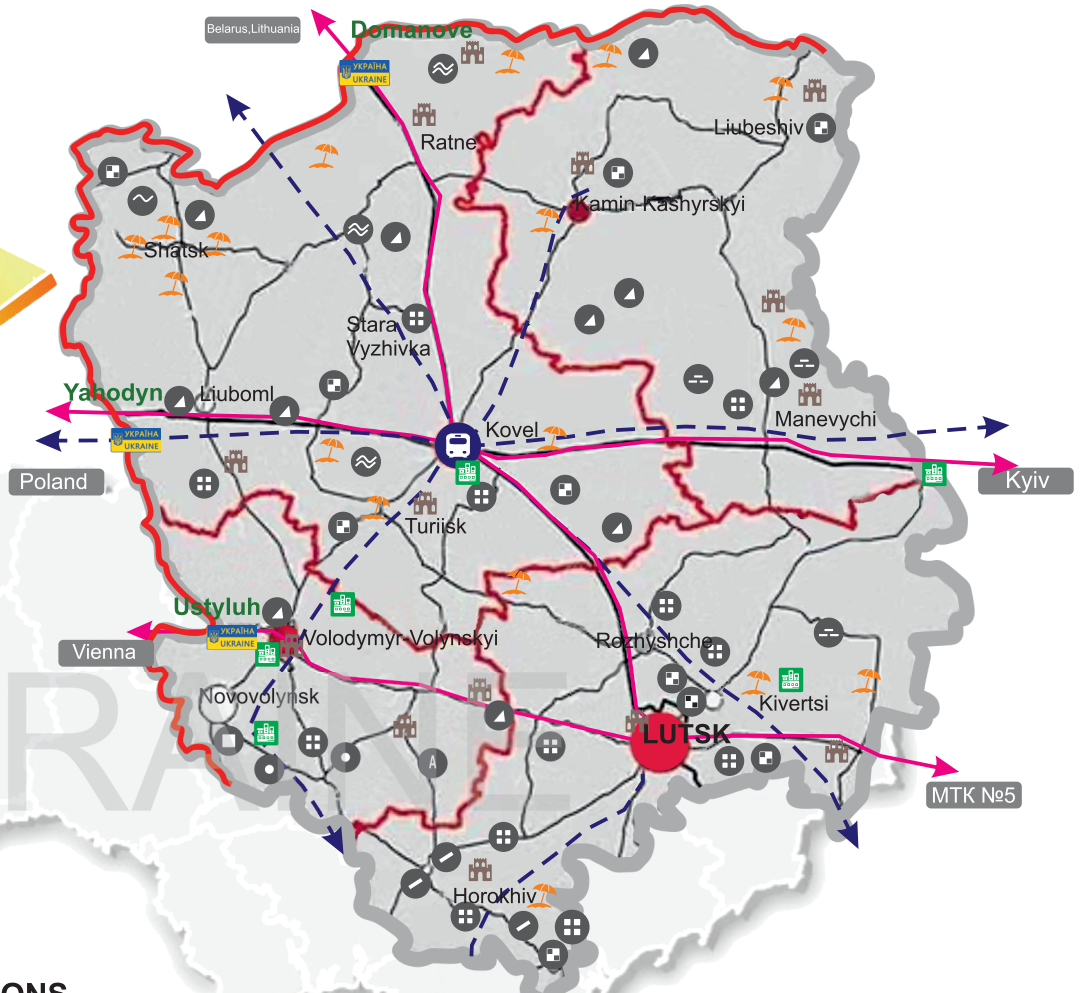


NATURAL GEOGRAPHICAL AND CLIMATE CONDITIONS

- 6191,4 km of highways
- 631,3 km of main railway tracks
- 9 border checkpoints (Republic of Poland and Belarus)
- Highways
- Railway
- Railway junctions
- State border of Ukraine
- Land plots suitable for industrial parks
- Historical and cultural sites and monuments
- Recreational areas
- Coal
- Natural gas
- Peat
- Sapropel
- Marl
- Chalk
- Sand
- Clay
- Clay soils

Volyn region

20.1 thou sq km



CLIMATE CONDITIONS

Temperate continental climate

- January
- 5,1 C°
- July
+18,4 - 18,8 C°
- Sunny days
140
- The amount of precipitation per year is
550 - 600 mm

ALTITUDE



The average height — 195 m
The highest point — 293 m
The lowest point — 139 m

WATER RESOURCES OF THE REGION



268 lakes, 137 rivers
one of the largest in Ukraine is a lake Svitiaz with an area of 2621 hectares

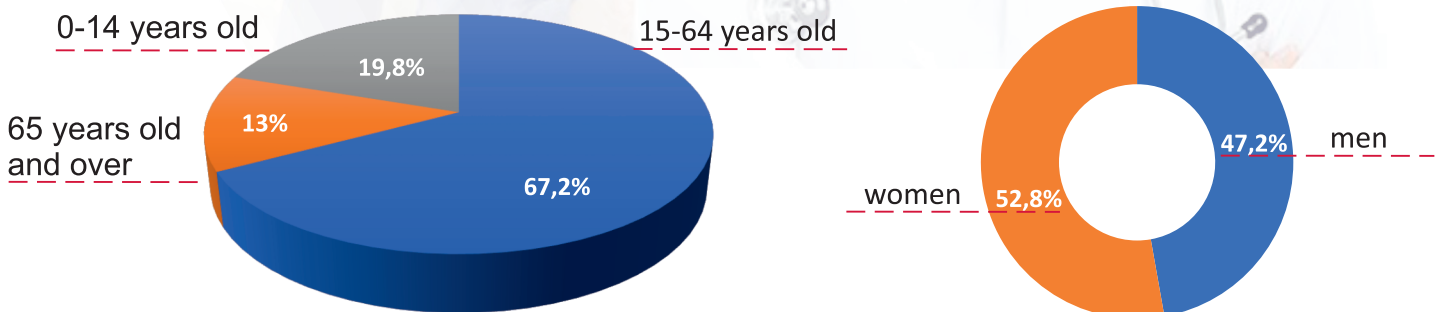
1031421 Population

414700 The working-age population

THE STRUCTURE OF EMPLOYMENT

	Trade; repair of motor vehicles and items of personal use	23,3%
	Agriculture	20%
	Industry	13,4%
	Education	12%
	Healthcare	7,1%
	Transport and communication	5,5%
	Construction	2,5%
	Other economic activities	1,3%

POPULATION STRUCTURE BY AGE AND SEX



27 higher educational institutions
20 vocational schools



Lesia Ukrainka Volyn
National University



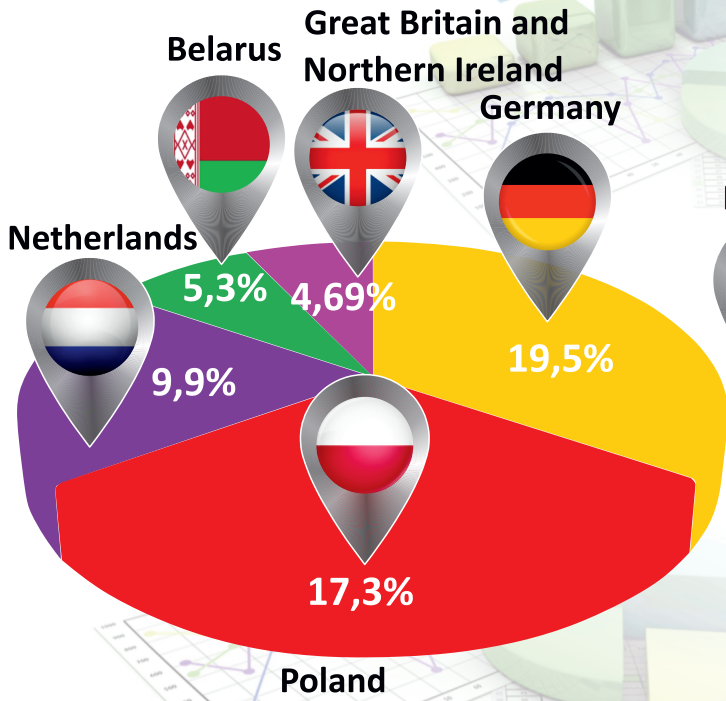
Lutsk National
Technical University



Lutsk Institute of Human
Development, University «Ukraine»

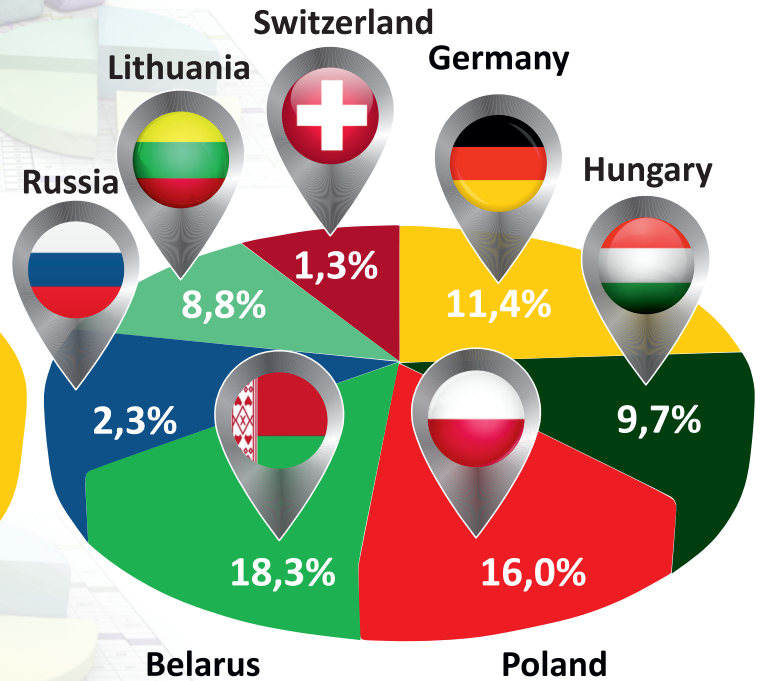
MAJOR EXPORTING COUNTRIES

694002.3 thousand dollars

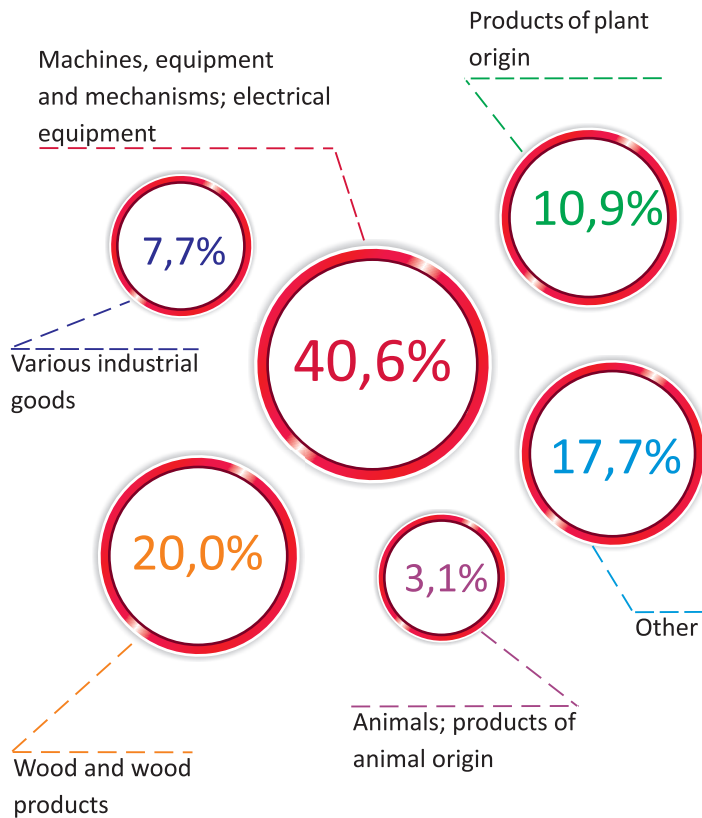


MAJOR IMPORTING COUNTRIES

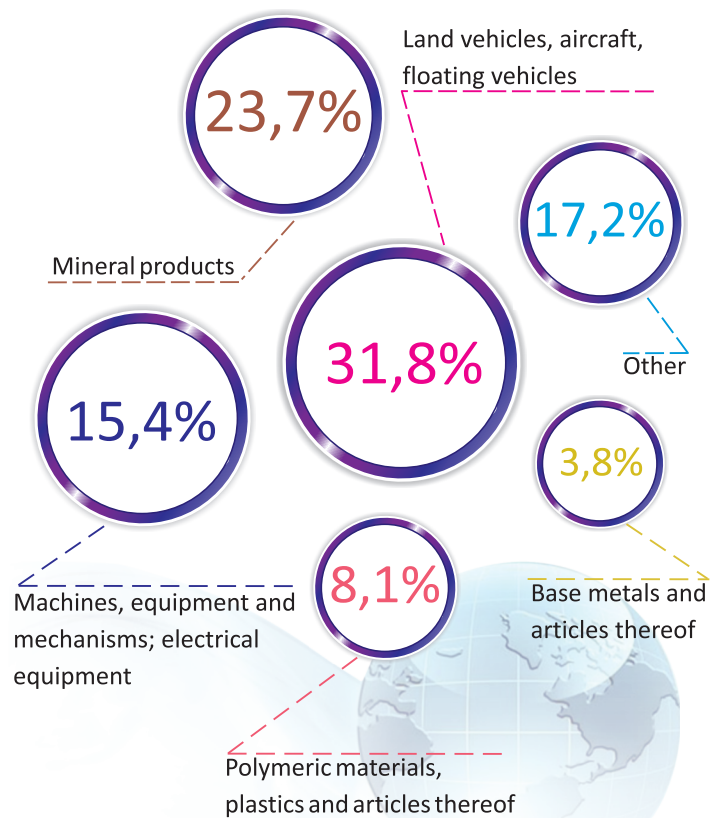
1456296.01 thousand dollars



COMMODITY STRUCTURE OF EXPORT

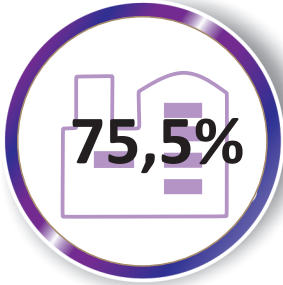


COMMODITY STRUCTURE OF IMPORT



THE STRUCTURE OF FOREIGN DIRECT INVESTMENT IN THE REGION

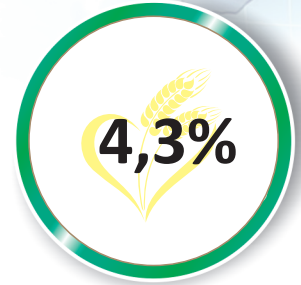
Industry



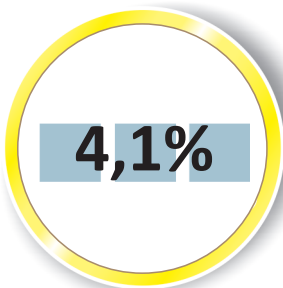
Wholesale and retail trade; repair of motor vehicles and motorcycles



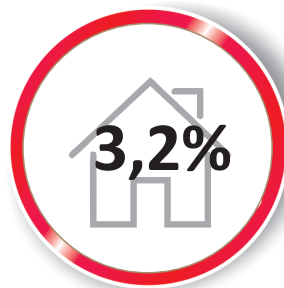
Agriculture, forestry and fisheries



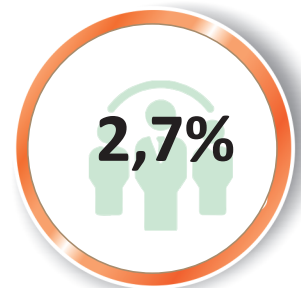
Other activities



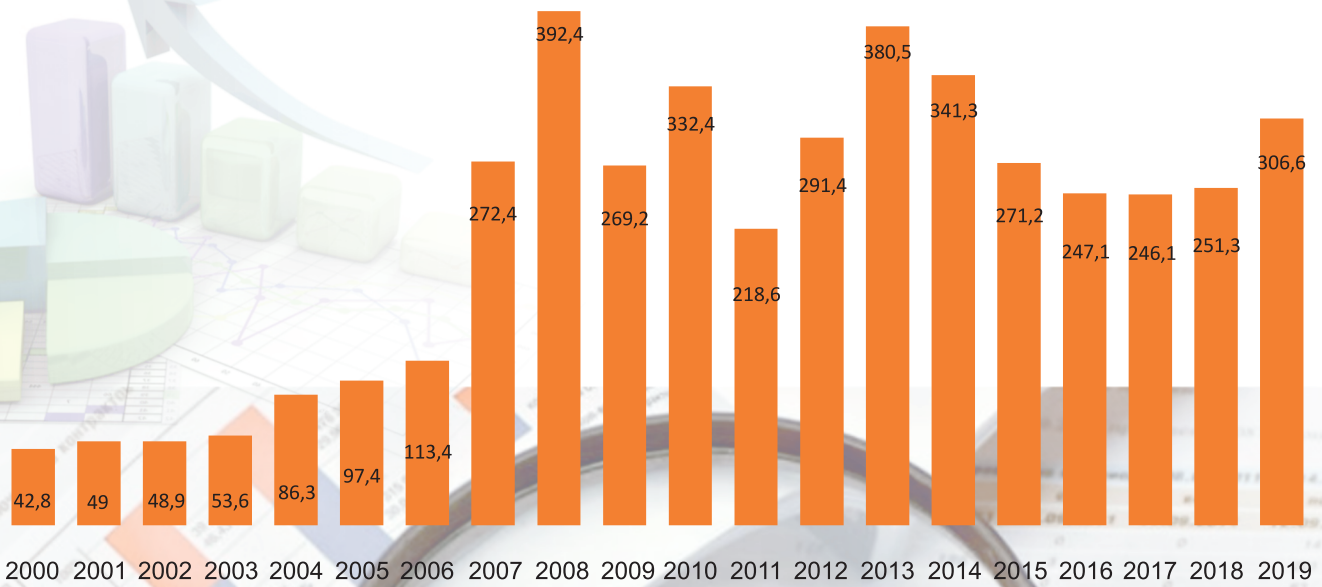
Real estate transactions



Activities in the field of administrative and support services



DYNAMICS OF DIRECT INVESTMENT IN VOLYN REGION (million USD)



INVESTMENT PRIORITIES

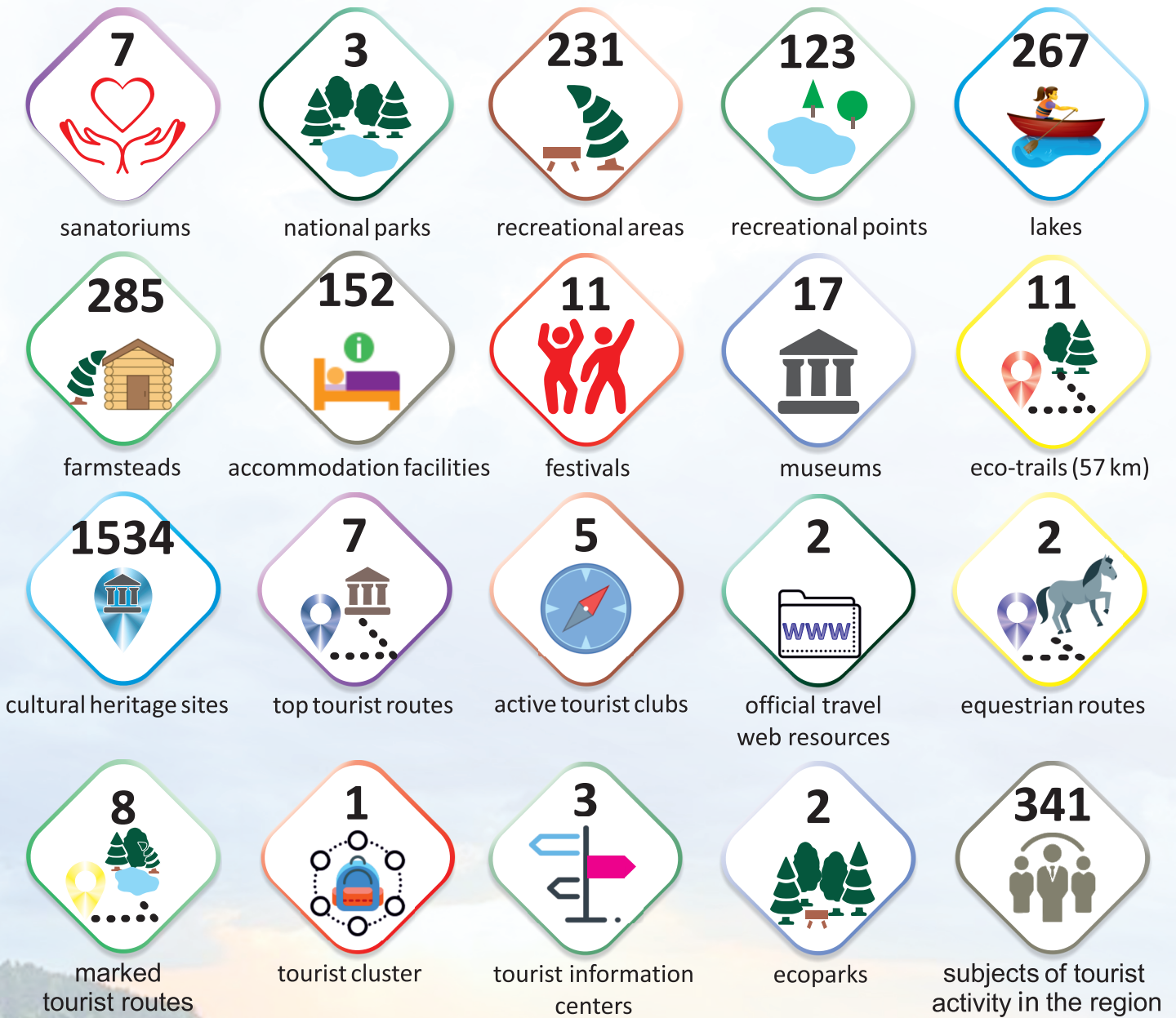
TOURISM

INDUSTRY

AGRICULTURE

LOGISTICS

TOURIST POTENTIAL OF VOLYN REGION



187,2 revenues to budgets of all levels, mln.

341 subjects of tourist activity in the region (legal entities and individuals)

1,4 tourist tax in the region, UAH million

THE MAIN DIRECTIONS OF TOURISM INDUSTRY DEVELOPMENT

- 1 Development of tourist infrastructure and material and technical base
- 2 Stimulating the development of sanatorium and resort tourism
- 3 Promotion of tourism and recreational potential
- 4 Staffing, scientific and methodological support
- 5 Rural tourism
- 6 Safety of tourists

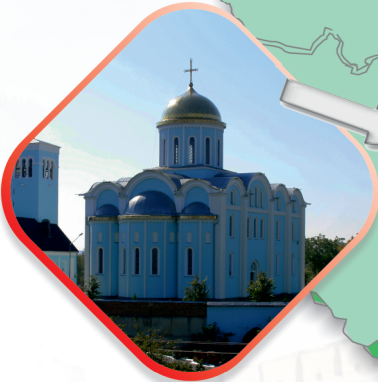
TOURIST MAGNETS OF THE VOLYN REGION



LAKE SVITIAZ.
SHATSK LAKE DISTRICT



SVALOVYCHI. PRYPIAT-STOKHID
NATIONAL PARK



THE ANCIENT VOLODYMYR



VOLYN
unique



LUTSK CASTLE



OLYKA.
RESIDENCE OF THE RADZIWILLS



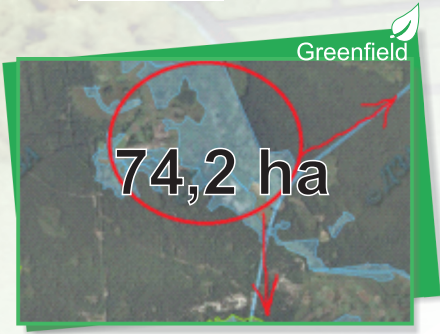
www.tourism.volyn.ua

LAND PLOTS AVAILABLE FOR INVESTMENT

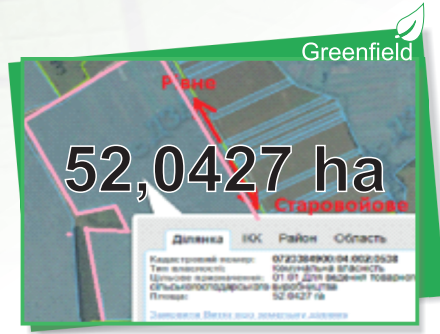


GREENFIELD

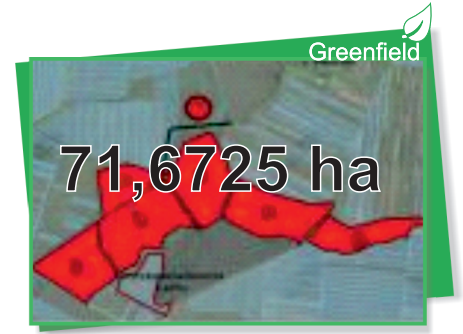
<https://invest.volyn.ua/ua/Zemelni--dilyanki.html>



-
-
-
-
-
-
-
-
-
-
-
- 1 km
-
- 20 km
-
- 213 km



-
-
-
-
-
-
-
-
-
-
- 3,5 km
-
- 2 km
-
- 270 km



-
-
-
-
-
-
-
-
-
-
- 1,1 km
-
- 17,8 km
-
- 126 km



-
-
-
-
-
-
-
-
-
-
- 6,5 km
-
- 10 km
-
- 115 km



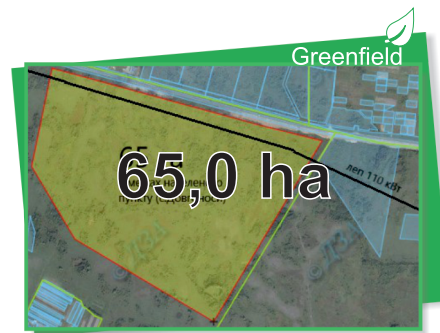
-
-
-
-
-
-
-
-
-
-
- 17 km
-
- 12 km
-
- 110 km



-
-
-
-
-
-
-
-
-
-
- 0,01 km
-
- 12,8 km
-
- 131 km



-
-
-
-
-
-
-
-
-
-
- 0,5 km
-
- 10 km
-
- 153 km



-
-
-
-
-
-
-
-
-
-
- 10 km
-
- 5 km
-
- 199 km



-
-
-
-
-
-
-
-
-
-
- 200 m
-
- 5 km
-
- 200 km



BROWNFIELD

<https://invest.volyn.ua/ua/Zemelni--dilyanki.html>

Brownfield

34400 m²

-
-
-
-
-
-
-
-
- 21 km
- 120 km
- 190 km

Brownfield

45000 m²

-
-
-
-
-
-
-
-
- 150 m
- 150 km
- 300 km

Brownfield

35000 m²

-
-
-
-
-
-
-
-
- 0,1 km
- 140 km
- 250 km

Brownfield

29700 m²

-
-
-
-
-
-
-
-
- 1,5 km
- 90 km
- 100 km

Brownfield

47197 m²

-
-
-
-
-
-
-
-
- 4 km
- 1 km
- 150 km

Brownfield

54635 m²

-
-
-
-
-
-
-
-
- 0,02 km
- 135 km
- 240 km

Brownfield

43600 m²

-
-
-
-
-
-
-
-
- 4 km
- 139 km
- 250 km

Brownfield

30000 m²

-
-
-
-
-
-
-
-
- 0,9 km
- 130 km
- 250 km

Brownfield

39000 m²

-
-
-
-
-
-
-
-
- 0,1 km
- 128 km
- 191 km



JSC «SKF Ukraine» (public)



LLC «Volyn-Zerno-Product»



SOE «Avtoskladalniy zavod №1»
JSC Automobile Company
«Bogdan Motors»



PJSC Volodymyr-Volynska
Ptakhofabryka



LLC «Kromberg@Schubert Ukraine»



PRAE named after
Shevchenko



SOE Lutsk Repair Factory
«Motor»



PJSC «Volynholding»



JV LLC «Modern-Expo»



PJSC Lutskantekhmontazh
№536



LLC «Gerbor-Holding»



Lutskiy Domobudivelnyi
Kombinat (LDBK)



LLC «Kronospan UA»



Construction Company
«Investor»



LLC «Lutsk Cardboard and
Paper Factory»



PJSC «Edelvika»



LLC «Volyn-Kalvis»



INVESTMENT PASSPORT

Investment portal of the Volyn region
<https://www.invest.volyn.ua/ua/Volin-turisti>



Tourist portal of the Volyn region
<http://www.tourism.volyn.ua/>



The official website of the Volyn Regional State Administration
<https://www.voladm.gov.ua/>



The official website of the Volyn Regional Council
<http://volynrada.gov.ua/>



Facebook page of the Department for External Relations, Investment Attraction, Tourism and Resorts of the Volyn Regional State Administration
<https://cutt.ly/cRwedFu>



Facebook page of the Volyn Regional State Administration
<https://www.facebook.com/voladm.gov.ua/>



Ukraine invest
<https://ukraineinvest.gov.ua/uk/>



European Integration portal
<https://eu-ua.kmu.gov.ua/>



VOLYN REGION